

# Fostering Hope

Catholic Community Services

A Forever Home for Everyone



PACIFIC  
Research & Evaluation, LLC

# Purpose of the Study

- Examine the effects of concentrating collaborative services in high-risk, high-poverty neighborhoods on:
  - Increasing protective factors
  - Decreasing risk factors
  - Reducing child maltreatment

# Theory of Change

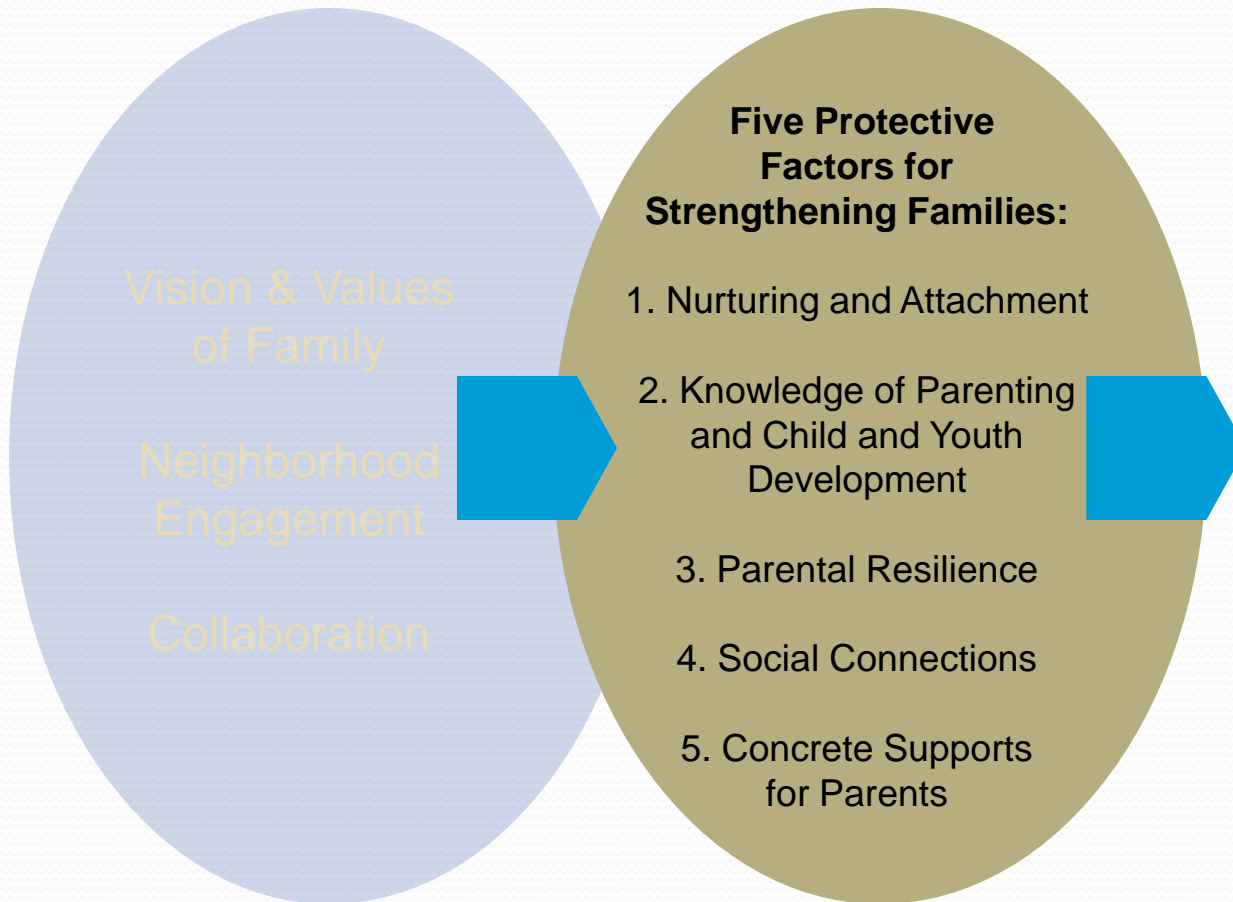
Vision & Values  
of Family

Neighborhood  
Engagement

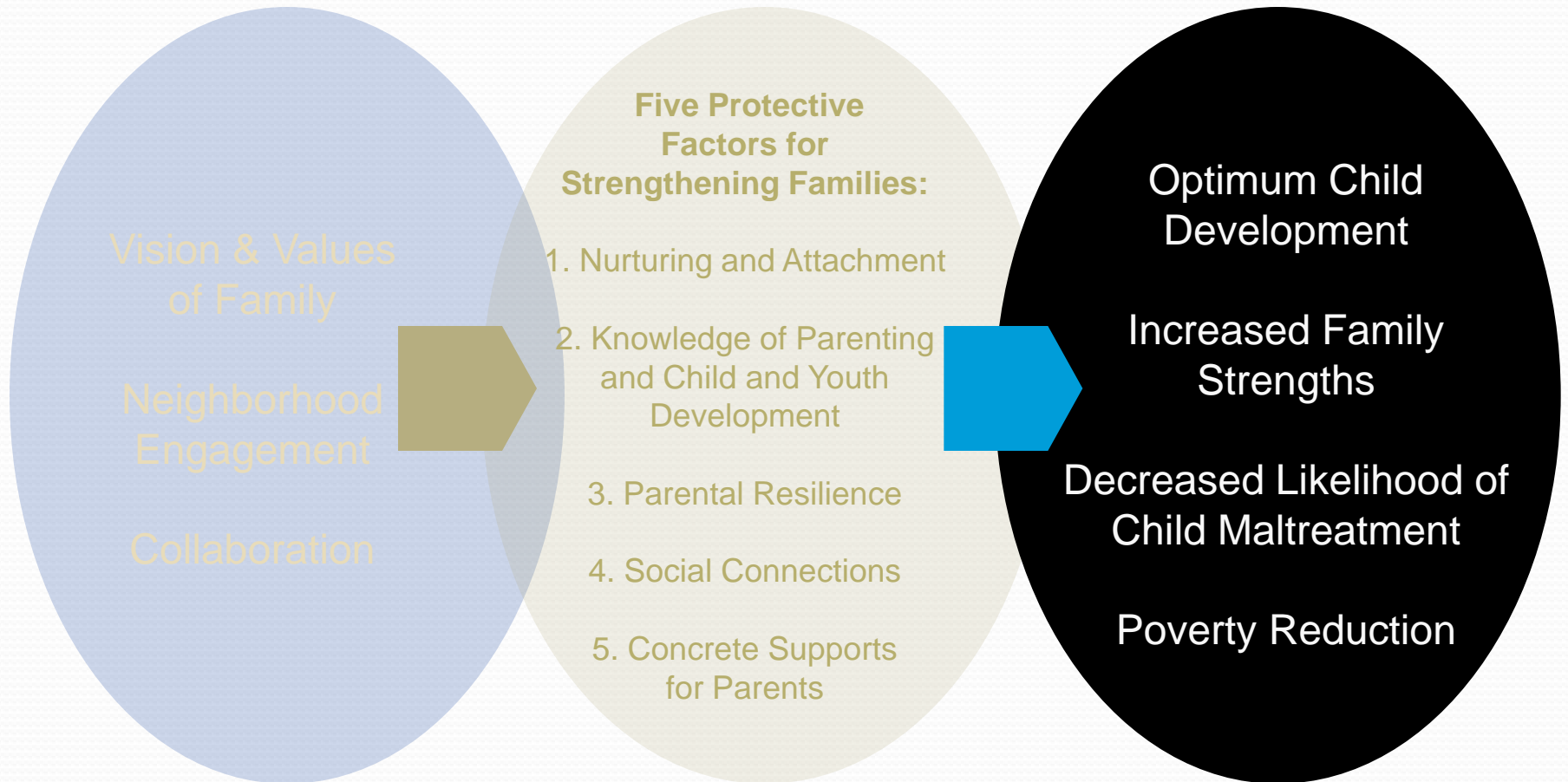
Collaboration



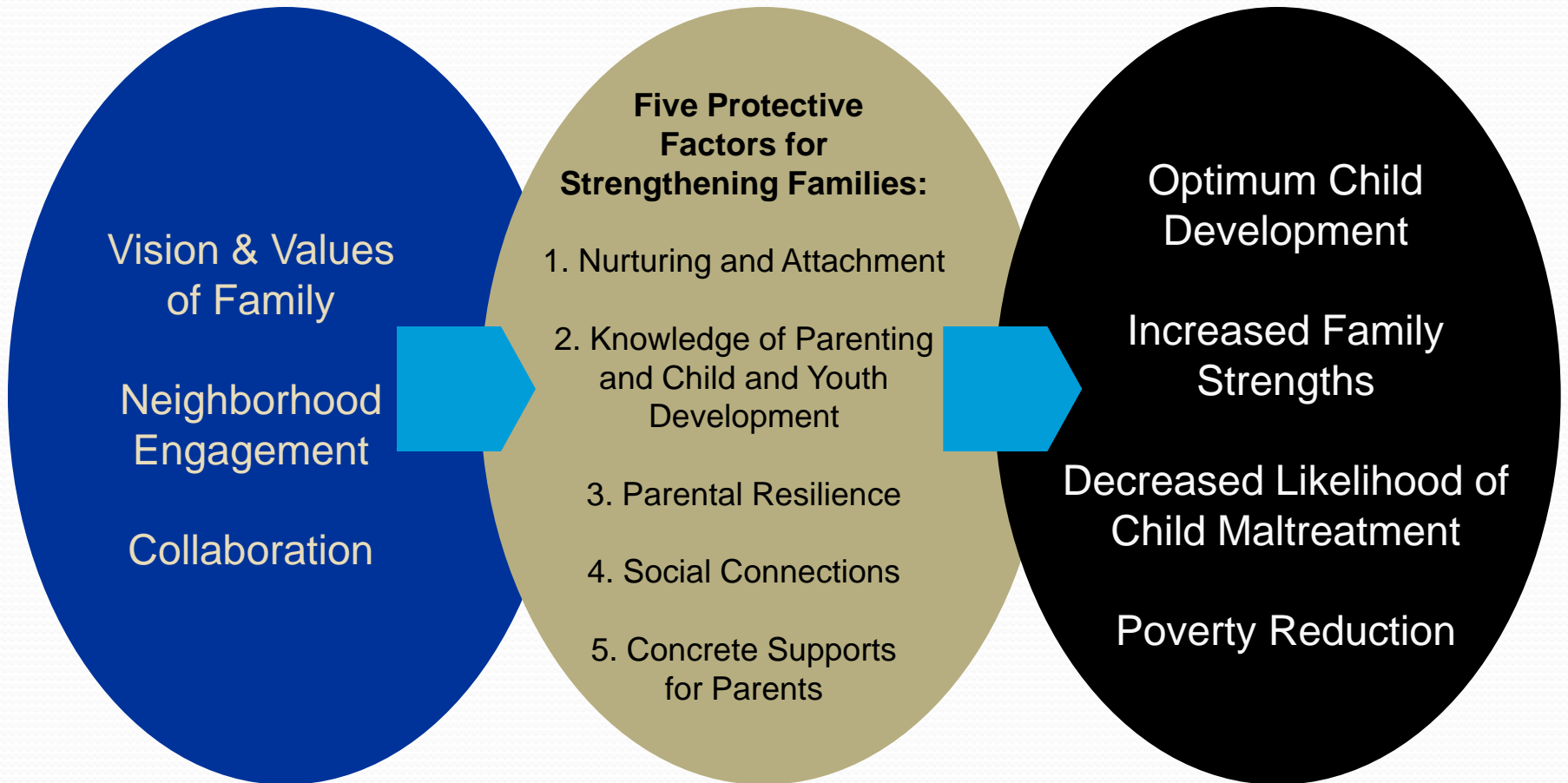
# Theory of Change



# Theory of Change



# Theory of Change



# Fostering Hope

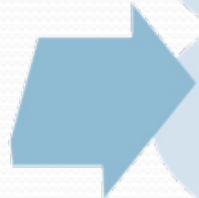
“Children’s early development depends on the health and well-being of their parents. Yet the daily experiences of a significant number of young children are burdened by untreated mental health problems in their families, recurrent exposure to family violence, and the psychological fallout from living in a demoralized and violent neighborhood.”

*Neurons to Neighborhoods: The Science of Early Childhood Development*



Dormant neighborhoods lacking family supports

Fragile families experiencing chronic and acute stressors



Support to Increase School Success

Parent Education & Support

Home Visiting with Wraparound Support

Safe Families for Children

Kith & Kin Connections

Neighborhood Outreach Coordination



Neighbors care about one another and neighborhoods are safe



Families protect and nurture their children

Children thrive



# Research Design

## Marion County

Swegel  
Elementary  
(Treatment Group  
1)  
n=33

Washington  
Elementary  
(Treatment  
Group 2)  
n=34

Hallman  
Elementary  
(Comparison  
Group 1)  
n=33

Hoover  
Elementary  
(Comparison  
Group 2)  
n=34

## Yamhill County

Sue Buel Elementary  
(Treatment Group)  
n=33

Edwards Elementary  
(Comparison Group)  
n=33

# Evaluation Components

- Process
  - Program model fidelity and service tracking
  - Parent satisfaction
  - Collaborative functioning
- Outcome
  - Influence of dosage on outcomes
  - Influence of participant characteristics on outcomes
  - Change in service access and use
  - Increase protective factors, decrease risk factors, and reduce child maltreatment rates

# Potential Challenges

- Maintaining collaborative involvement
- Recruiting/retaining participants
- Quantity of data to be collected
- Demographic variation between program and comparison neighborhoods
- Obtaining data from DHS

# Questions?

